



Rovaniemi
Truly Lapland log houses

健康的な木の住環境 ログハウス

Santa Claus Lives Here	3
Rovaniemi Materials	4
The Structure of a Log House	6
House projects	7
Kaira (50m ²) 平屋モデル	14
Pola (63m ²) 可愛い2階建モデル	16
Jokka (90m ²) 小家族用2階建モデル	18
Koste (118m ²) 小家族用2階建モデル	20
Jarama(136m ²) タウンモデル	22
Sakura(160m ²) 大家族用モデル	24
The Classic House	26
Scandinavia MK	28
Arizona	30
Scandinavia with a swimming pool	32



SANTA CLAUS LIVES HERE

The Rovaniemi trade mark was named after the town of Rovaniemi, the capital of Lapland. It stands at the crossing point of the two big rivers Ounasjoki and Kemijoki. Rovaniemi is the place where the dreams of children from all over the world are realized. There is an office where letters and requests for Christmas presents are received, along with a main office where Santa Claus meets guests. There is also a central post office from which guests can send greetings letters and parcels to their friends and relatives. This is the magical Northern town in which a festive atmosphere is ever present, and the constant presence of Santa Claus and his friendly team of elves are to be felt.

The local people are careful to preserve the rich national traditions of Lapland. The culture is therefore quite original and unique. Laplanders are drawn to bright colours. There are many intense red, blue and green colours in their national clothing. The music of Lapland, which is very relaxing and able to draw your mind out of everyday reality, is popular in Finland. Lapland is the most exotic place in Finland. Many things are perceived differently here as opposed to other parts of the country. The summer consists of the Polar day

when, for almost two months, the Sun doesn't dip beneath the horizon. And one can enjoy unusual night walks. The late autumn is an extended period which acquired the name of the Winter Kingdom.

Although the world and life around are always changing rapidly, Lapland, with its unique natural beauty, distinctive people and unhurried flow of life, remains unchanged. People from different parts of the world love to come here to enjoy the beauty of the sun-dappled hills in autumn, and to familiarize themselves with the fairy-tale quality of winter in Finland. This quality of winter is wonderfully described by Tove Jansson in his stories about the Moomin Trolls. Lapland is the fairy-tale world where many dreams come true. Nature that is untouched by human beings is enough to take the breath away, feelings become more sensitive, and a sense of harmony with the world emerges.



サンタクロース村内にある弊社ロバニエミの事務所です。ロバニエミ空港から車で5分。是非、お出かけ下さい。

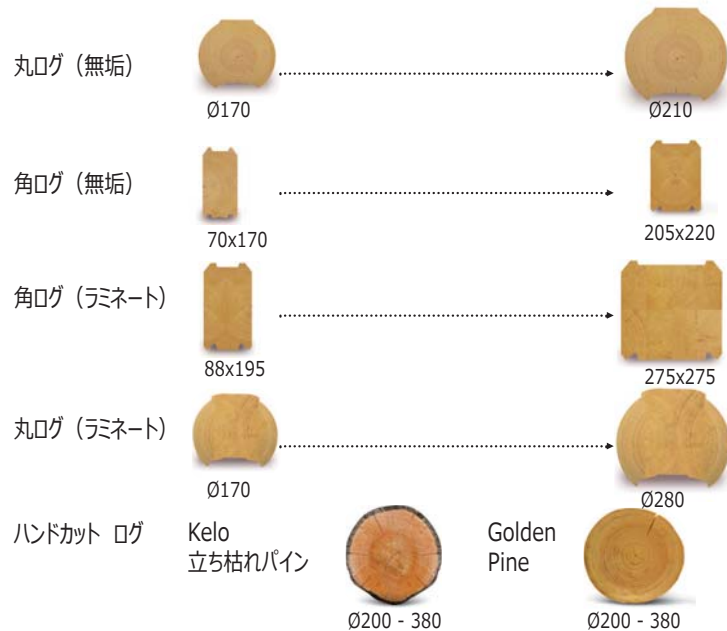
The main sightseeing attraction of Lapland is, of course, Santa Claus. His presence is felt in everything. The people of Lapland, and especially of Rovaniemi, the home of Santa Claus, say that the festive atmosphere is the prevailing feature of life there.

ROVANIEMI MATERIALS

Rovaniemi offers a wide range of building materials that are known in the wooden house building industry, such as rounded logs, chinked square logs, laminated square logs and laminated round logs. This is alongside two exclusive materials, the famous Golden pine, named after its special warm golden colour and dry 'dead standing' pine KELO. Each type of material has a broad range of typo sizes. This is an advantage as it gives customers a wide variety when choosing a material. Customers are therefore able to select the most suitable size in accordance with specification and price of their house. Different climatic conditions pertaining in the area where the house is to be erected will also influence the materials used in construction.

The choice of material, though, generally depends on the personal preferences of the future owner of the house. Taking into account both a client's picture of their ideal wooden house and the climatic conditions pertaining in the

chosen location, the specialists from Rovaniemi select, from the wide range of materials on offer, that which is most suited to that particular architectural project and which shows the future building to best advantage.



Rovaniemi benefits:

It is ecologically clean. The special atmosphere has a beneficial influence on the health of the occupants.

The low density of the timber ensures that the construction is both lighter and cheaper to erect.

Due to a unique drying process, the optimal moisture content in timber is achieved and therefore the natural qualities of the wood are not spoilt.

A minimal shrinkage level of timber is achieved because of the usage of special drying process and know-how in regulating and control of shrinking.

Excellent parameters regarding sound and heat insulation.

Fast and easy assemblage techniques.

The high processing quality of the material surfaces allows for a minimum of wall decoration.

Extensive architectural possibilities and esthetic appearance.



Round Log

Round logs are valued by people who treasure classical wooden houses, since they are pleasing to eye and look typically Russian. A house made of round logs looks rather like a tower-chamber out of Russian fairytales and is ecologically friendly.



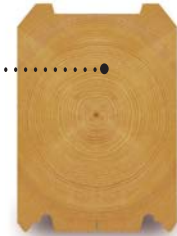
Laminated Log

High quality processed material which preserves its form during exploitation and does not crack. It possesses higher durability due to the special gluing technology and has excellent façade surfaces along with a minimal level of shrinkage in height (only 1-2%). It is also quicker to build.



Dried 'Dead Standing' KELO Pine

This is a building material produced by hand. It is distinguished by a fine silver colour, an original texture and a strong fragrance of pine. The main advantages of this timber, however, are the fact that its appearance changes very little over time, the fact that it is ecologically friendly and the fact that it has very minimal moisture content. This results in an almost complete absence of shrinkage.



Massive Log

Massive log is a widely known building material. It is processed on specialized high-precision equipment in order to obtain perfect lines and correct sizes. It is an ecologically clean material which allows for a balance of the humidity and the level of oxygen in the house, which makes for a comfortable internal microclimate.



Laminated Round Log

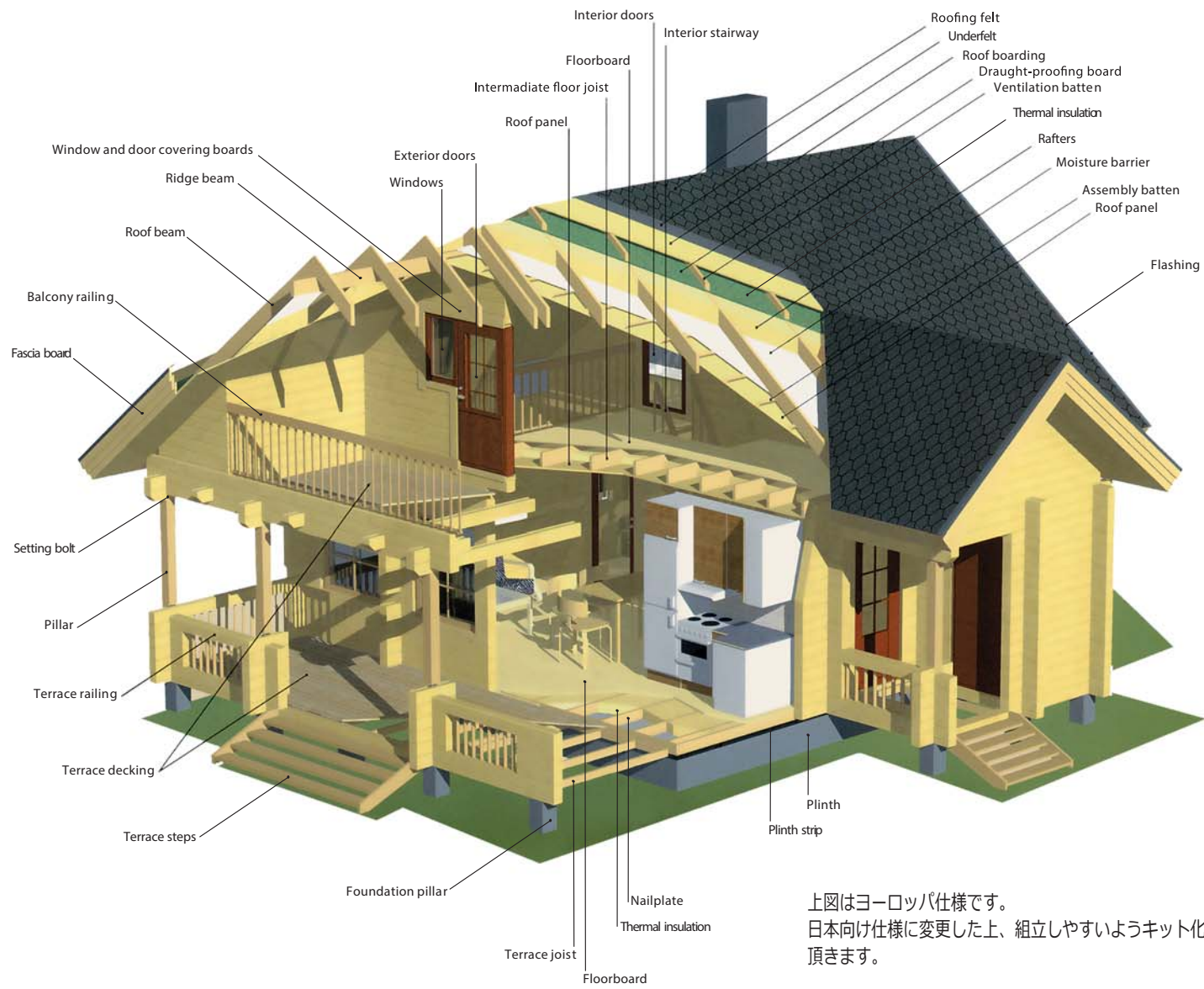
Laminated round log is one of the most modern materials used in wooden house building. It combines within itself all the qualities of chinked laminated squared log with the charm of the round forms of traditional round logs.



Golden Pine

This timber got its name from the warm golden color that the timber possesses after the trunk has been processed under a strong jet of water. Due to such processing, when only the top level of bark is removed, the timber preserves all its natural protective properties and remains resistant to severe climatic conditions.

THE STRUCTURE OF A LOG HOUSE



上図はヨーロッパ仕様です。
 日本向け仕様に変更した上、組立しやすいようキット化して出荷させて頂きます。

Rovaniemi

Truly Lapland log houses



HOUSE PROJECTS



ロバニエミのログハウスは近代的設備を持ったフィンランド工場
生産されます。

これらモデルプランはあくまでプラン例をして、ご用意いたしました。
ロバニエミのログハウスはフリープランでご対応させていただきます。

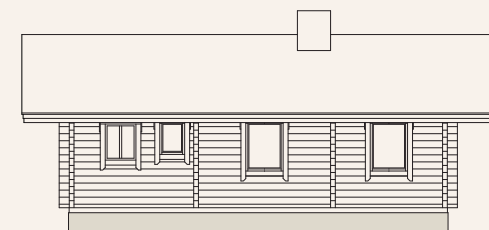
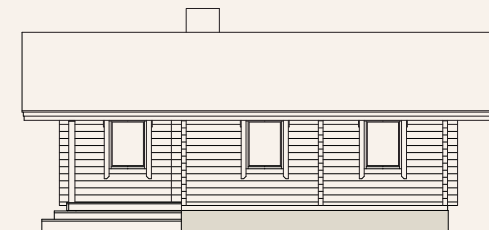
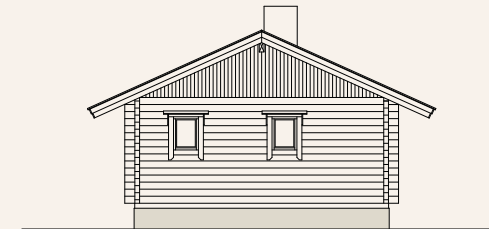
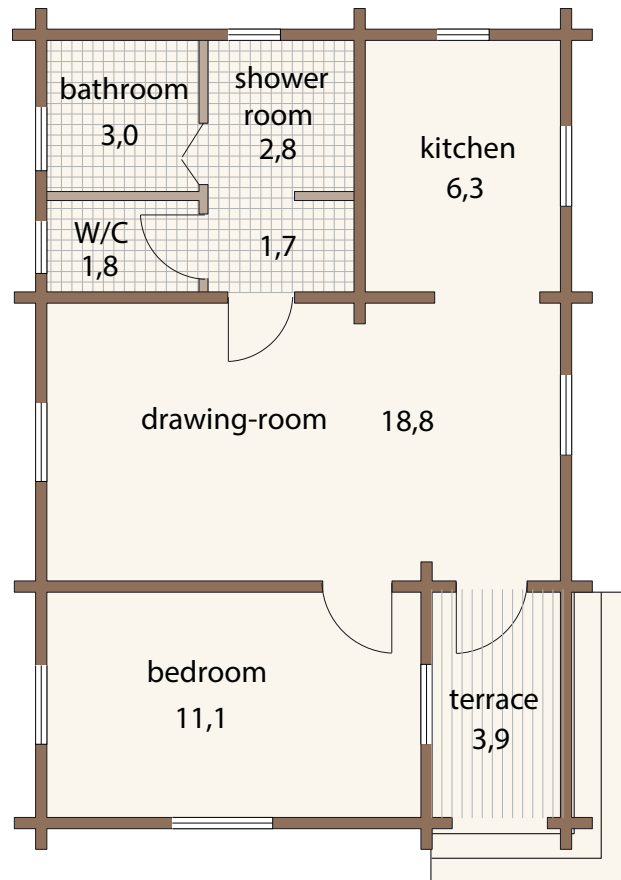
PROJECT

KAIRA

ご年配の方の別荘として設計したコンパクトな平屋モデルです。建物内部は高い傾斜天井となっているため、開放的な室内となっています。各部屋には大きな窓が配置されて換気と採光にも考慮されています。趣味の隠れ家としてお勧めのプランです。

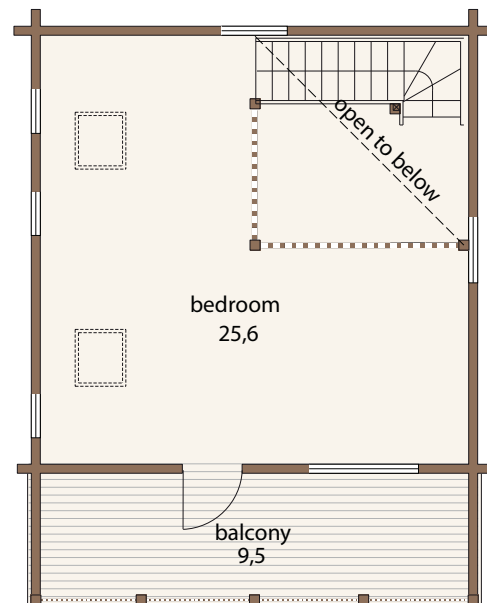
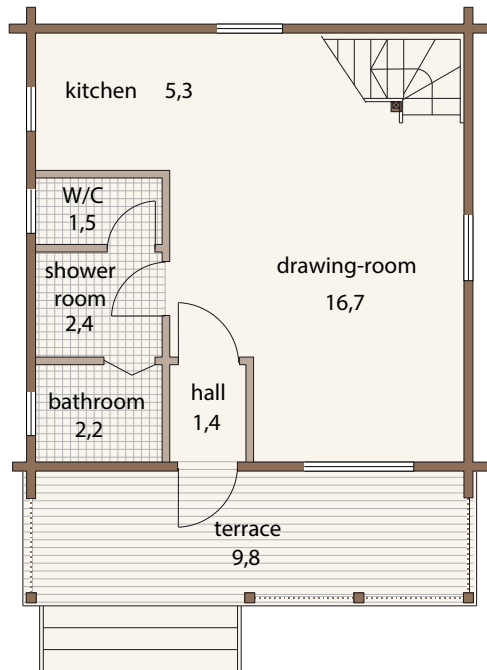


床面積	49,68 m²
テラス	4,32 m²
寸法	6,0x9,0 m

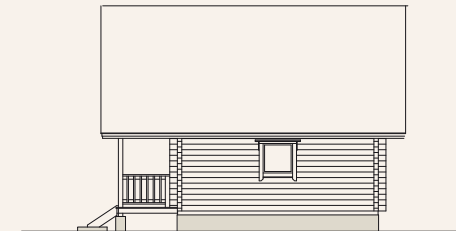
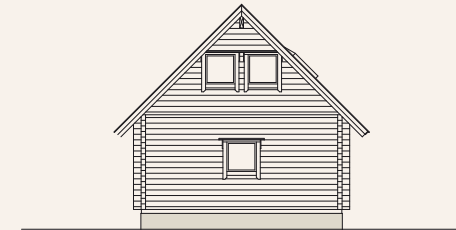
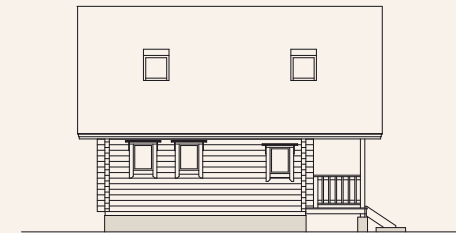


若いご夫婦の別荘として設計しました。コストを考慮し、矩体を出来る限りコンパクトにいたしました。ですが家としての設備は全て揃っていて機能的なログハウスとなっています。屋根は矩勾配（45度）とし、小屋裏利用のロフトとテラスも設けています。



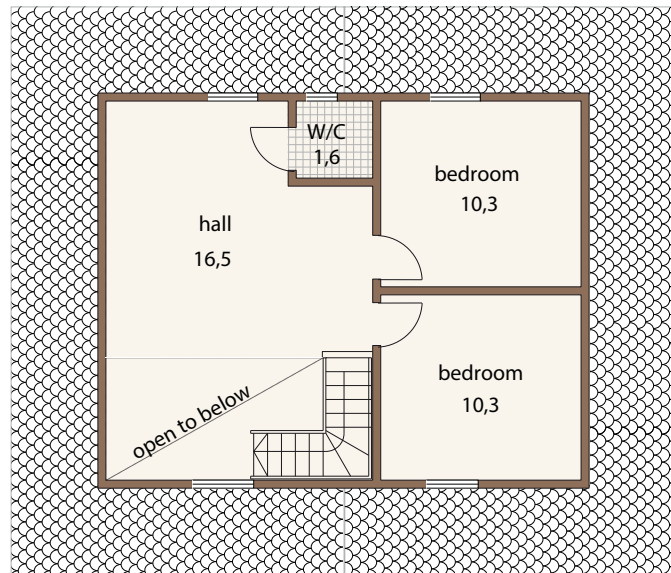
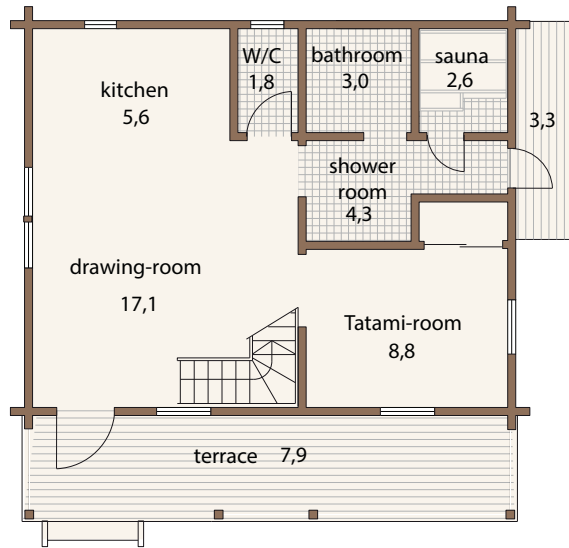


床面積	63,0 m ²
テラス	21,6 m ²
寸法	6,0x7,8 m

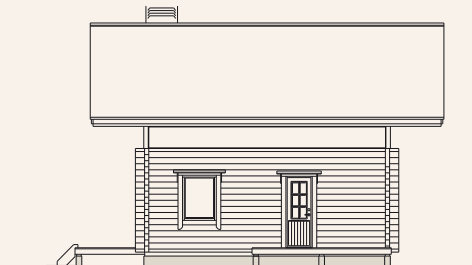
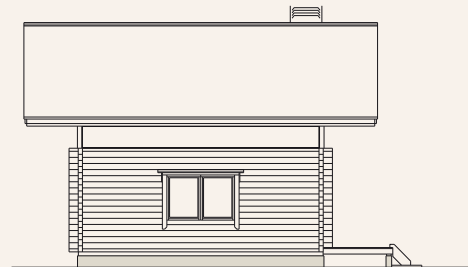
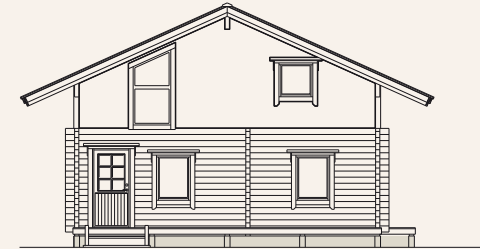


オーソドックスな切妻タイプですが、ロフトの居住性を高めて、小家族の住宅用としてお使い頂いています。フィンランドの一般家庭にあるサウナがこのログハウスにも設置されており、帰宅するのが楽しみになります。



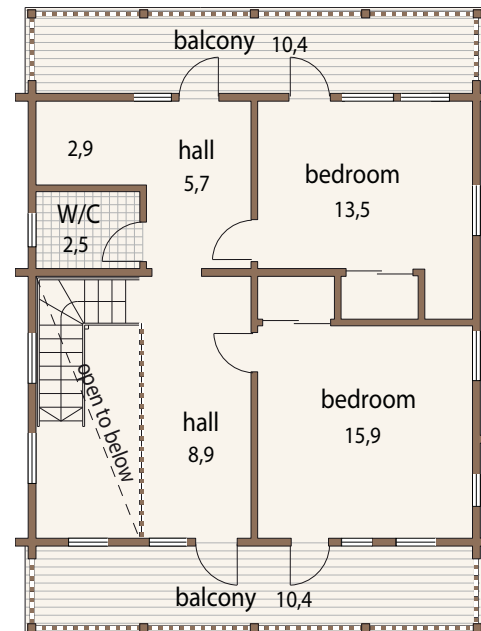
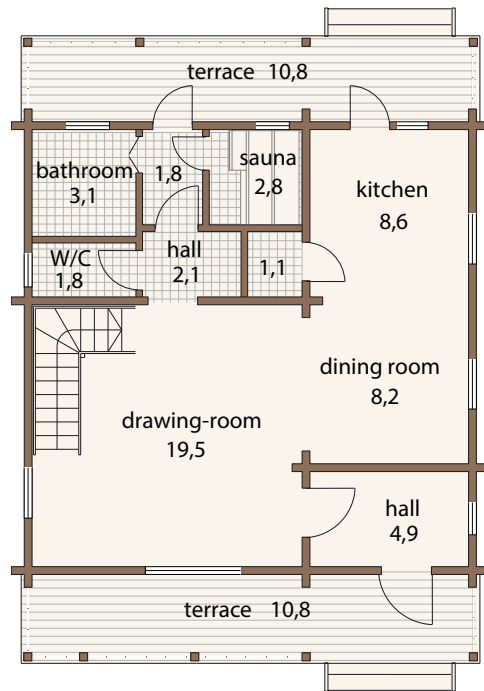


床面積	92,85 m²
テラス	16,4 m²
寸法	8,0x7,9 m

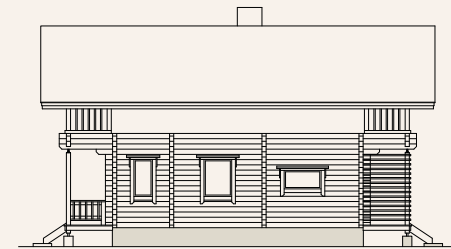
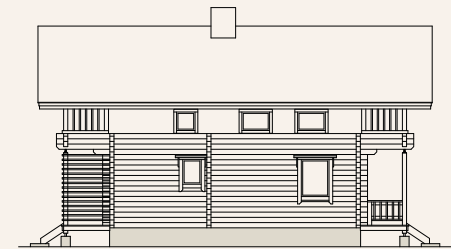


前出のJokkaをベースとして建物を大きくしたプランです。市街地に建つ住宅用として設計いたしました。両側の妻面にそれぞれのテラスを設け、とても機能的なログハウスです。大きな玄関は風除室としても機能し、寒い地域に最適です。吹き抜けのあるリビングにはたくさんの窓が有り明るいログハウスとなっています。



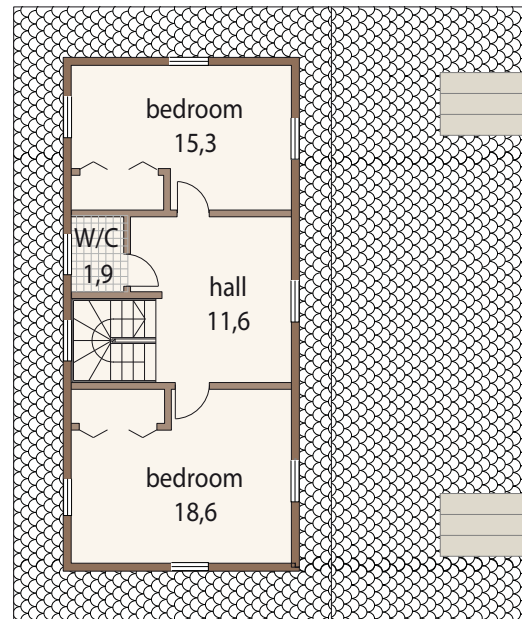
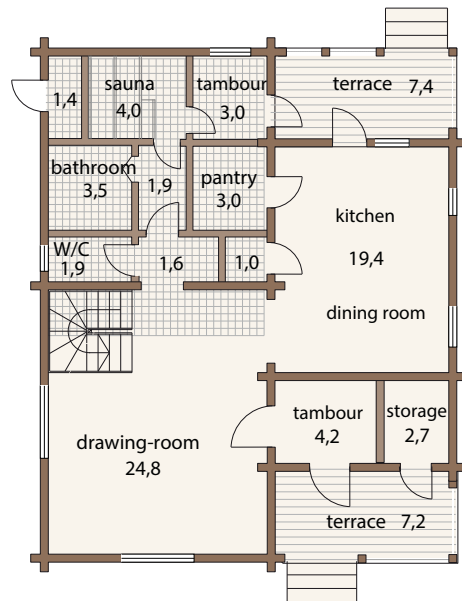


床面積	118,3 m ²
テラス	48,0m ²
寸法	8,0x11,0 m

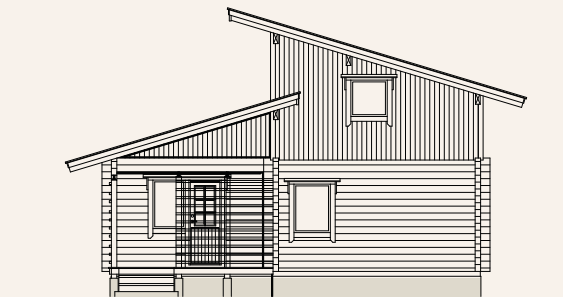
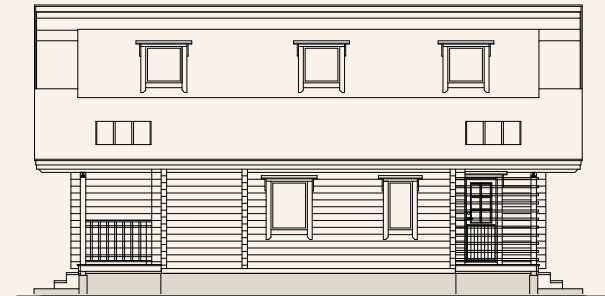
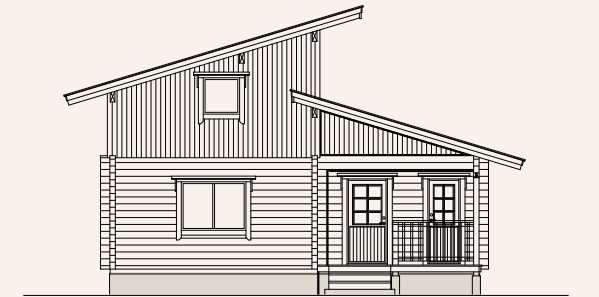


市街地にも調和する建物として設計いたしました。サンテラスを両側に設け室内を明るく演出しています。また段差の有る屋根は、室内の開放感を創り出し、全ての部屋にもれなく採光できるようにとの発想です。



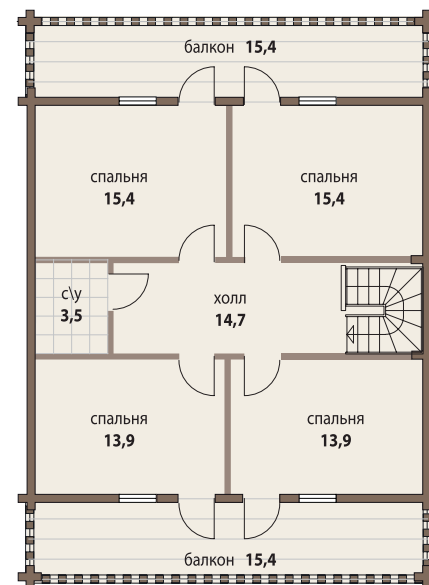
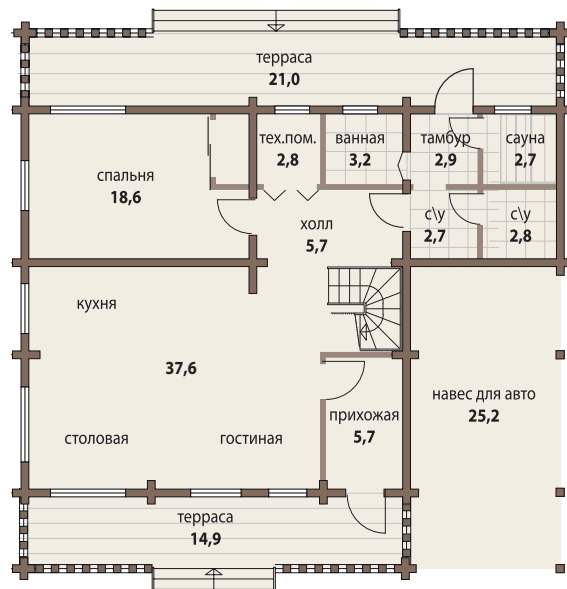


床面積	135,7 m ²
テラス	16,0m ²
寸法	9,0x11,2 m

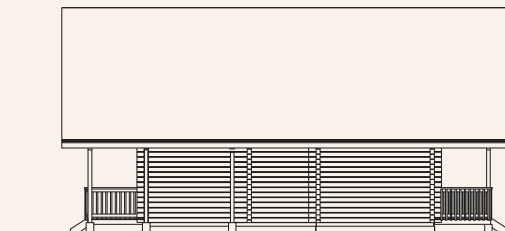


ご自宅用ログハウスというご依頼で設計いたしました。玄関付近にはガレージスペースも設け、車を降りて玄関まで雨天でも濡れずに移動できます。また全てのお部屋にはテラスが付き、開放感と機能性を重視いたしました。シンプルな構造で余裕の間取りにいたしました。





床面積	279,7 m ²
テラス	73,1 m ²
寸法	12,9x12,9 m

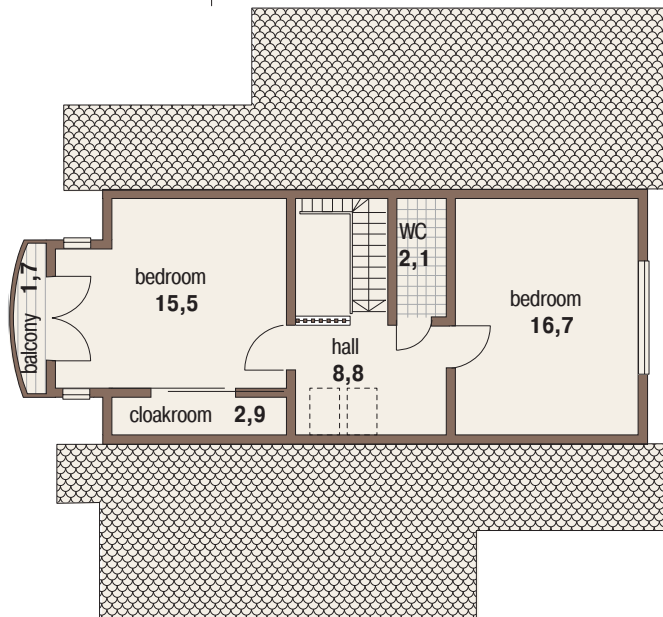
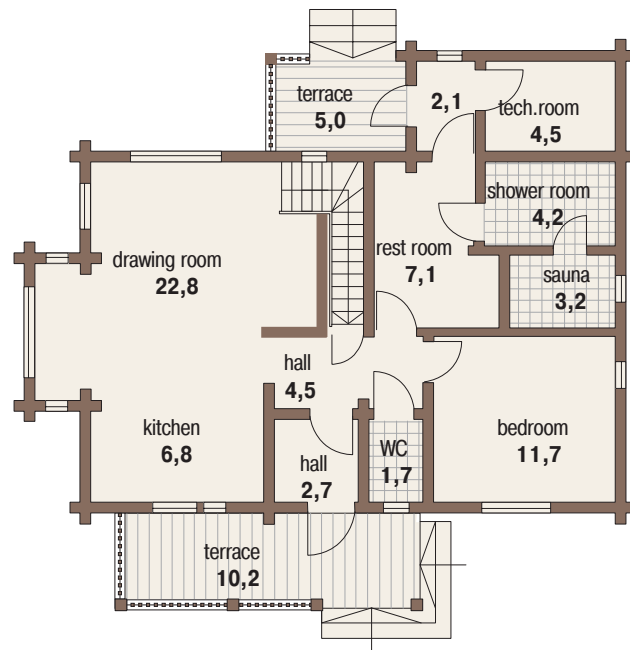


THE CLASSIC HOUSE

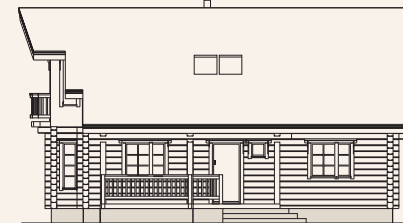
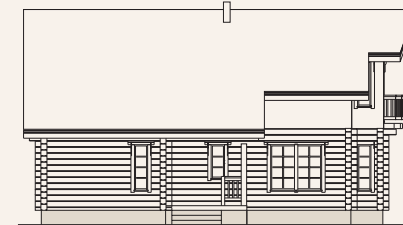
This well-proportioned house of very harmonious proportions is a really classic house. The medium-sized balcony in the French style, complete with lightly-twisted fencing, gives a lightness and uniqueness to the appearance of the house. The house is compact without losing any of the functional parts. On the first floor, there is a living room, a dining room, a kitchen and a toilet with a shower compartment and a sauna. There is also a guest room and a rest room with an opening onto the terrace. There is an exit way from the kitchen to the outside. On the second floor, there are two bedrooms, a spacious hall and a toilet. One of the bedrooms has a cloak room and an opening onto the balcony. hall leads to a fire place, and further on there is a dining room which is completed by an oriel window.



THE CLASSIC HOUSE



床面積	156,2 m ²
テラス	18,5 m ²
寸法	11,6 x 10,7 m

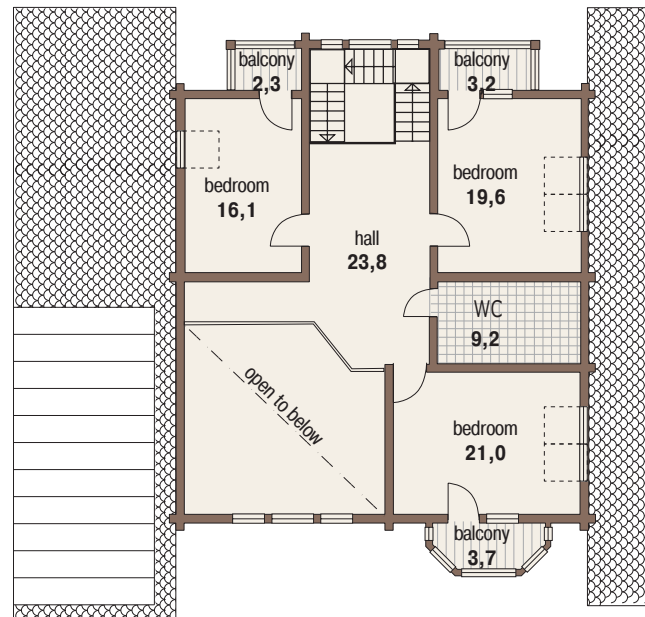
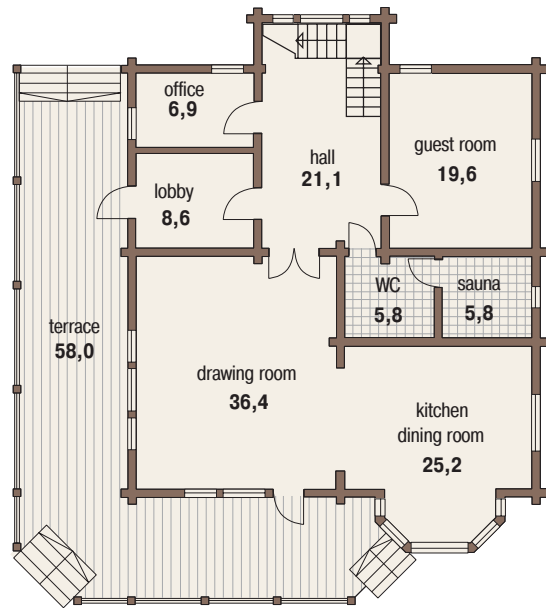


SCANDINAVIA MK

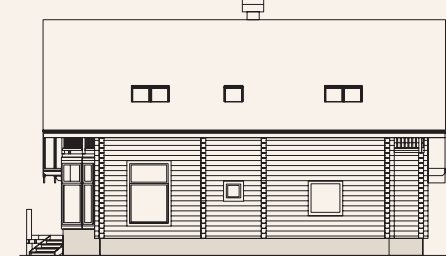
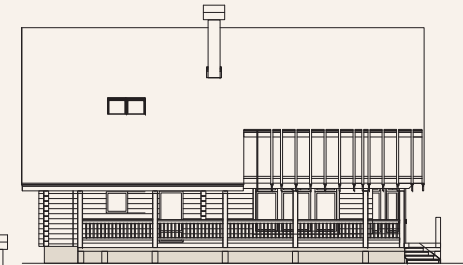
Scandinavia MK is a variation on the popular Scandinavia project. It is an extremely light and spacious house due to the large glazed second floor living room and an oriel window with a panoramic view, very well placed by the designers of this project. The distinctive feature of this project is that the two terraces are united into one, giving extra comfort and convenience to both guests and owners of the house. This area is perfectly suited for the leisurely taking of tea by the family on warm summer evenings. There is another balcony on the second floor, and the areas of the storage room and the entrance hall are larger on the first floor.



SCANDINAVIA MK



床面積	315,3 m ²
テラス	74,2 m ²
寸法	14,5 x 16,3 m



ARIZONA

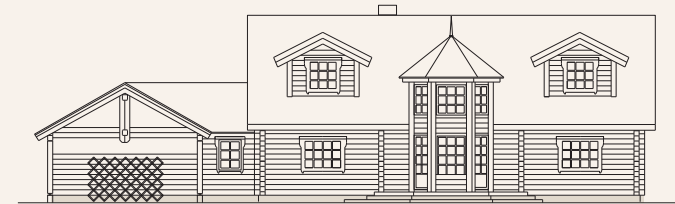
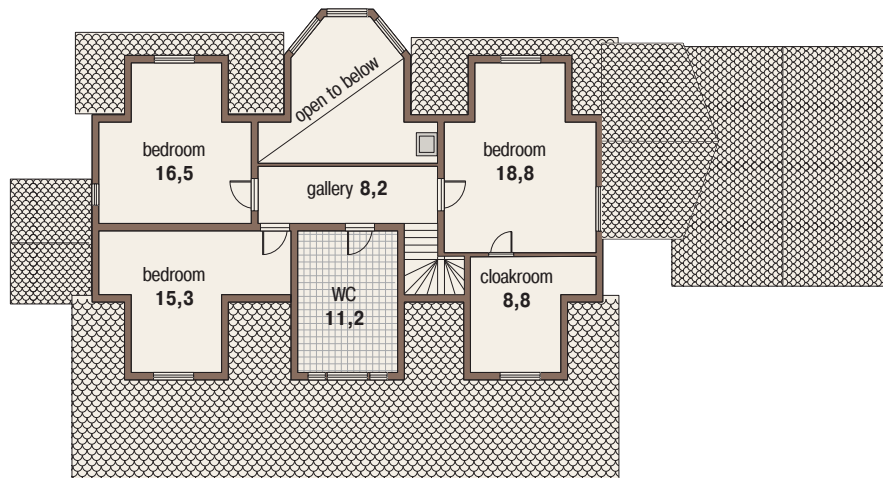
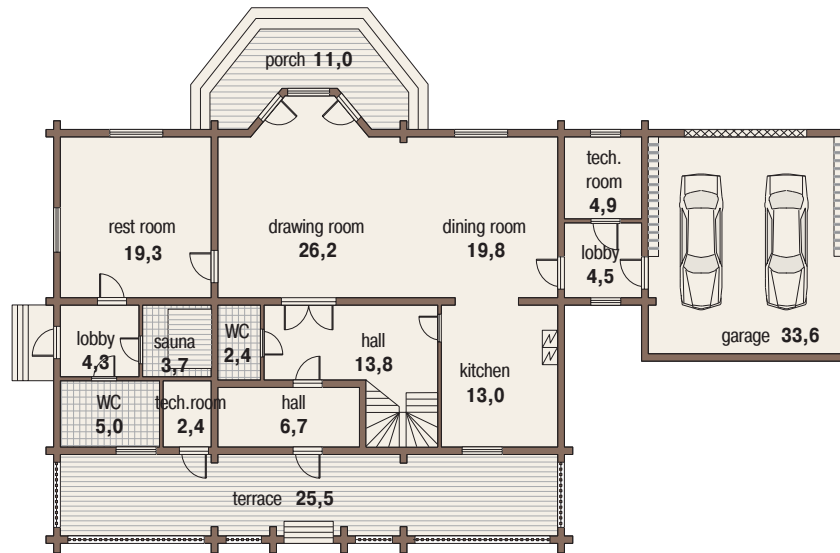
The architecture of this house is unusual in Russia. A wide roofed terrace, that runs for the whole length of the house, is, without doubt, both comfortable and practical in the climatic conditions pertaining in Russia. The unusual way in which the mansard has been constructed allows for many different possibilities with the interiors of the bedrooms.

A large, roofed terrace is accessible under even the most inclement weather conditions. Alternatively, if people feel the need to enjoy the beauties of nature and feel the expansiveness of the space around the house, then there is an open terrace accessible from the opposite side of the house.



ARIZONA

床面積	315,6 m ²
テラス	50,2 m ²
寸法	23,5 x 13,7 m

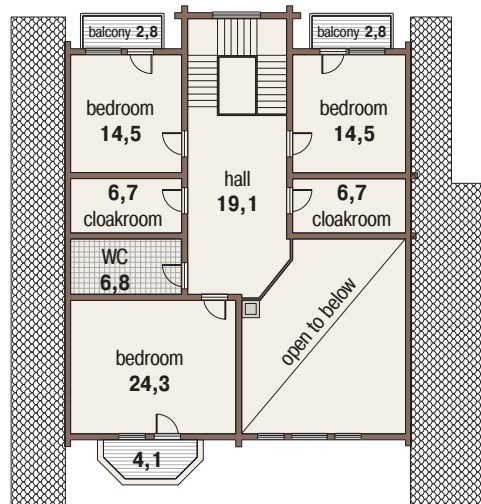
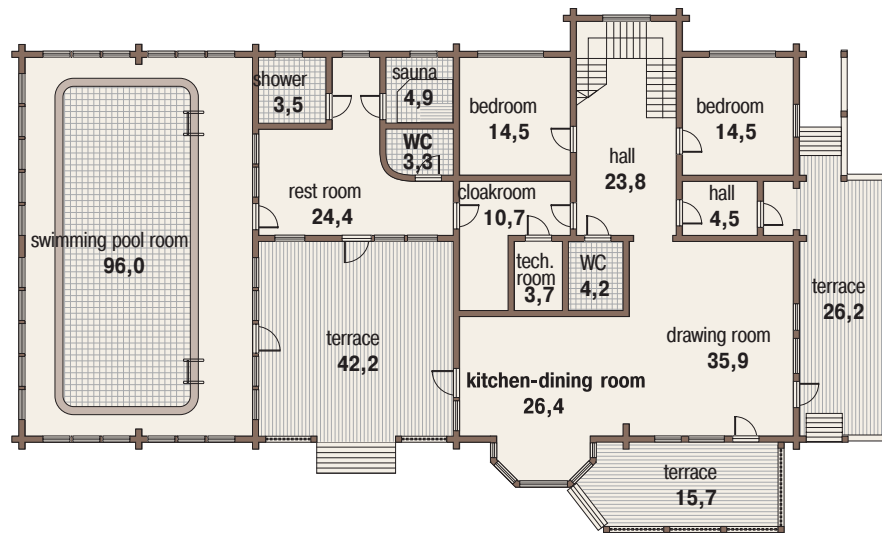


SCANDINAVIA WITH A SWIMMING POOL

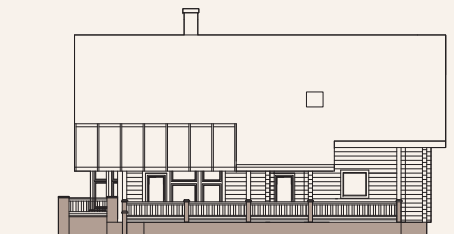
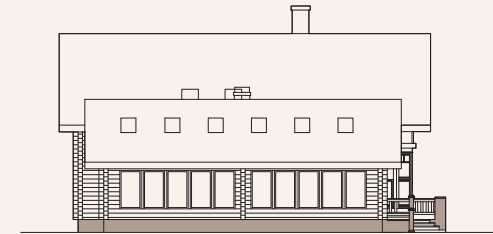
The architecture of this house is unusual in Russia. A wide roofed terrace, that runs for the whole length of the house, is, without doubt, both comfortable and practical in the climatic conditions pertaining in Russia. The unusual way in which the mansard has been constructed allows for many different possibilities with the interiors of the bedrooms.



SCANDINAVIA WITH A SWIMMING POOL



床面積	499,6 m ²
テラス	104,2 m ²
寸法	28,8 x 17,1 m



VELUX®

Bringing light to life



www.velux.com

Effex



Designer Panel

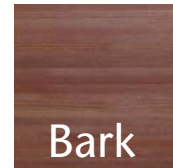
Live it up with the new look of real wood.



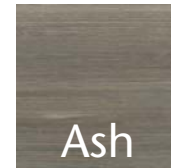
Effex Cloud



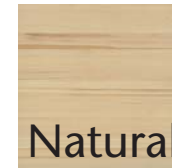
Coal



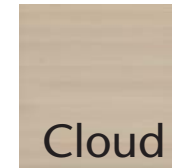
Bark



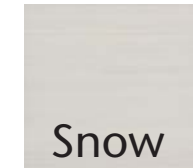
Ash



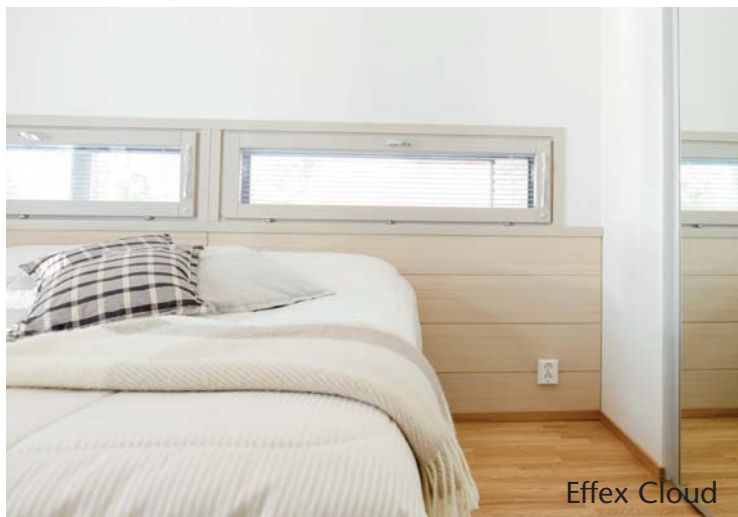
Natural



Cloud



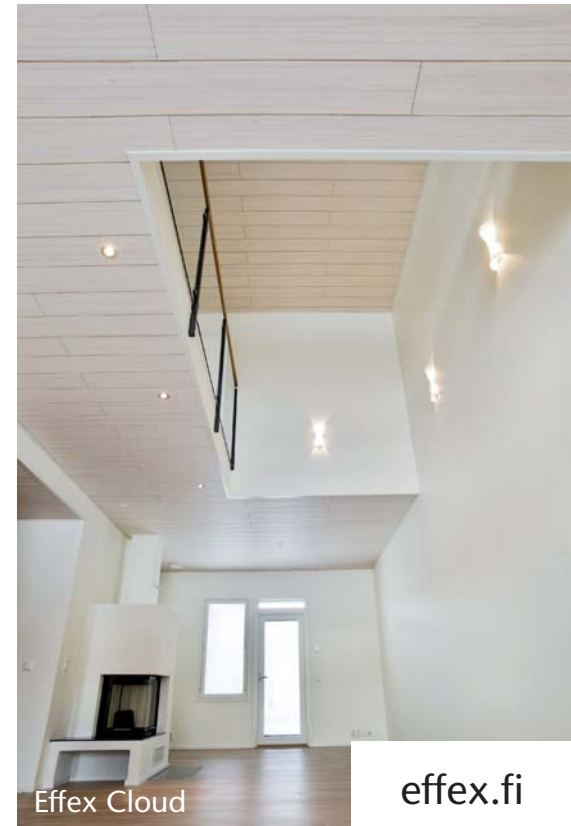
Snow



Effex Cloud



Effex Coal and Snow



Effex Cloud

effex.fi



Quality on every step with the latest technology

A beautiful home with right atmosphere is the result of careful choices. Your stair should be attractive and fit Your individual style. Traditional wooden banisters with stylish finishing or modern materials like glass and steel combination create a sense of light and spaciousness. Make Your staircase Your home's centrepiece.



SOFT ^{profin}
DESIGN
COLLECTION

If you have the
scenery,
let it show.



profin[®]
Doors & Windows

www.profin.fi

profin sliding
doors

Exterior sliding door is suited for houses & villas, flats, terrace as well as holiday houses and for renovation. It also works as a terrace, balcony, summer room and entrance door. With a exterior sliding door the surrounding nature can be brought inside bringing a new degree of enjoyability to living.

All Profin products are made in Finland.

健康的な木の住環境 ログハウス

