

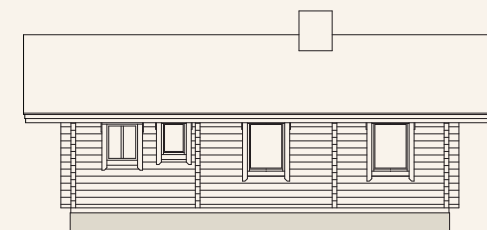
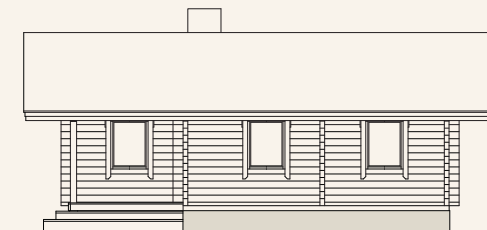
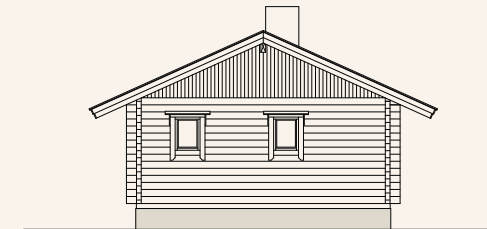
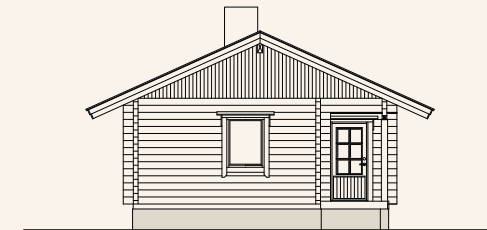
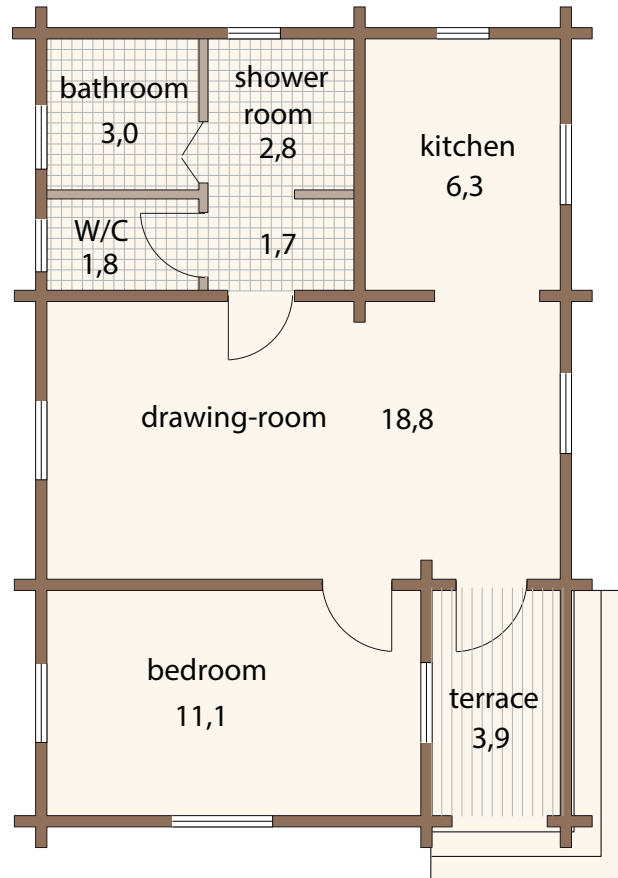
PROJECT

# KAIRA

ご年配の方の別荘として設計したコンパクトな平屋モデルです。建物内部は高い傾斜天井となっているため、開放的な室内となっています。各部屋には大きな窓が配置されて換気と採光にも考慮されています。趣味の隠れ家としてお勧めのプランです。

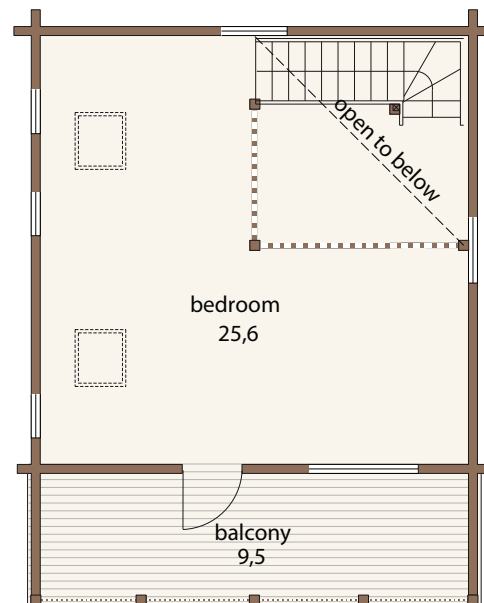
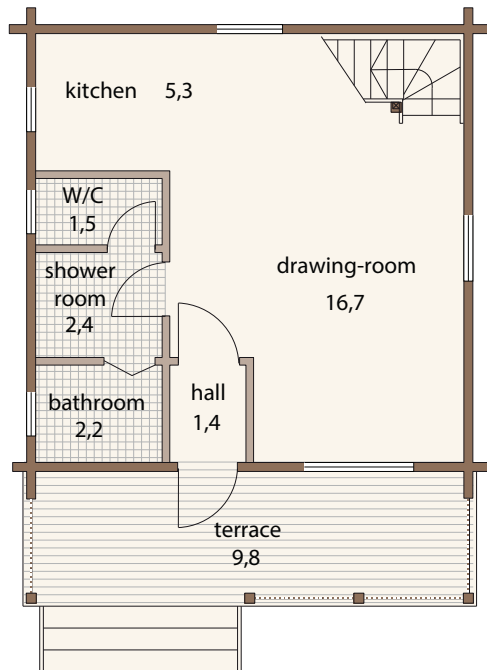


床面積	<b>49,68 m<sup>2</sup></b>
テラス	<b>4,32 m<sup>2</sup></b>
寸法	<b>6,0x9,0 m</b>

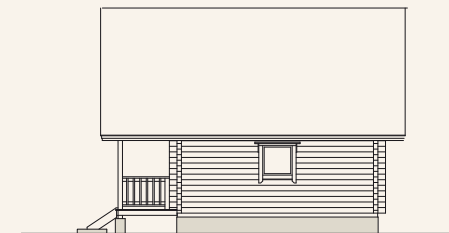
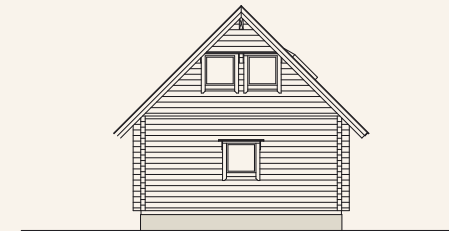
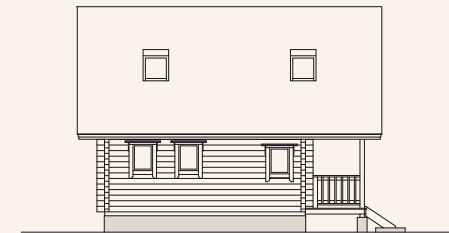


若い夫婦の別荘として設計しました。コストを考慮し、矩体を出来る限りコンパクトにいたしました。ですが家としての設備は全て揃っていて機能的なログハウスとなっています。屋根は矩勾配（45度）とし、小屋裏利用のロフトとテラスも設けています。



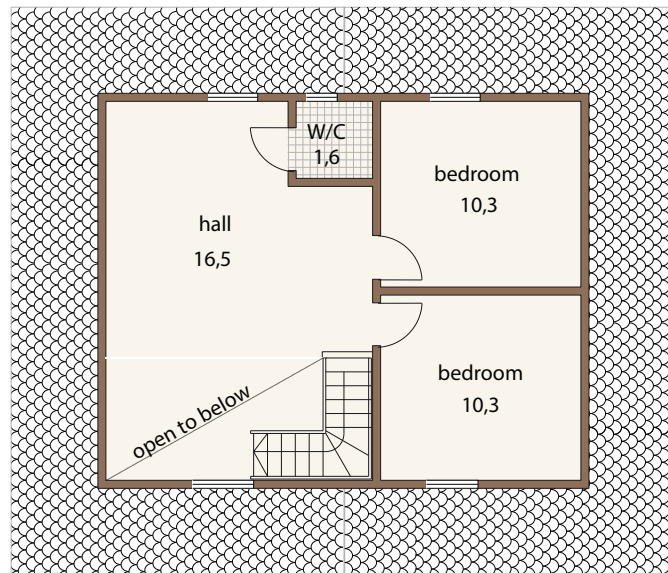
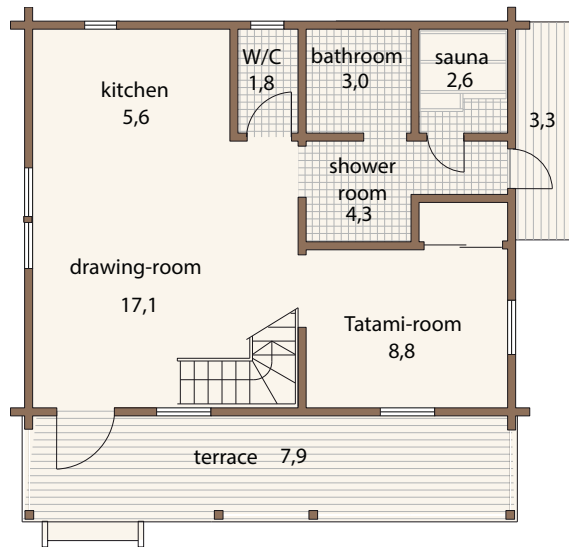
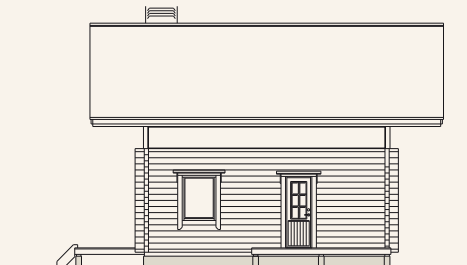
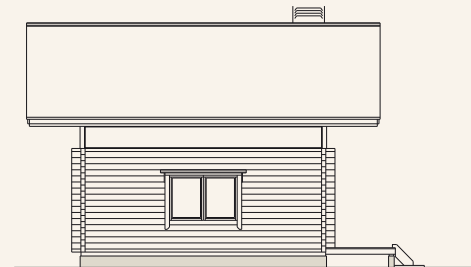
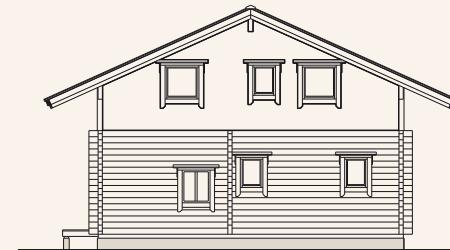


床面積	63,0 m <sup>2</sup>
テラス	21,6 m <sup>2</sup>
寸法	6,0x7,8 m



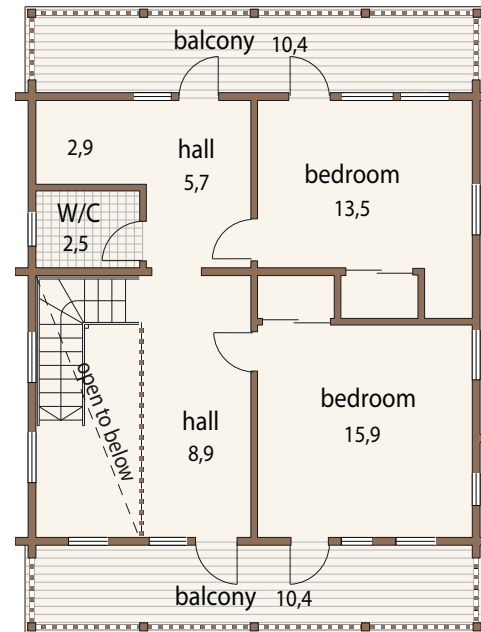
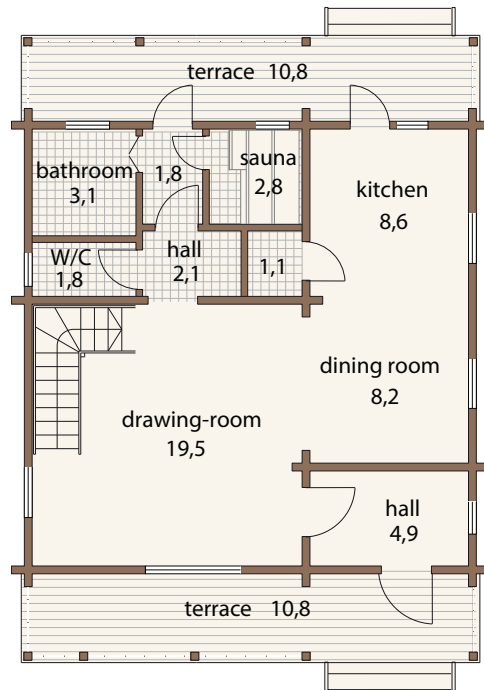
オーソドックスな切妻タイプですが、ロフトの居住性を高めて、小家族の住宅用としてお使い頂いています。フィンランドの一般家庭にあるサウナがこのログハウスにも設置されており、帰宅するのが楽しみになります。



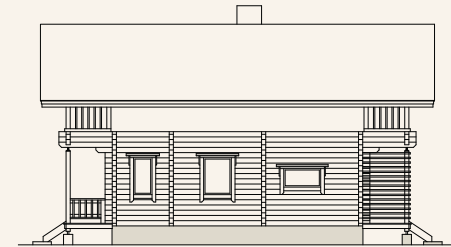
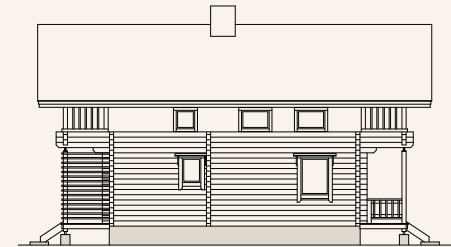
床面積 **92,85 m<sup>2</sup>**テラス **16,4 m<sup>2</sup>**寸法 **8,0x7,9 m**

前出のJokkaをベースとして建物を大きくしたプランです。市街地に建つ住宅用として設計いたしました。両側の妻面にそれぞれのテラスを設け、とても機能的なログハウスです。大きな玄関は風除室としても機能し、寒い地域に最適です。吹き抜けのあるリビングにはたくさんの窓が有り明るいログハウスとなっています。





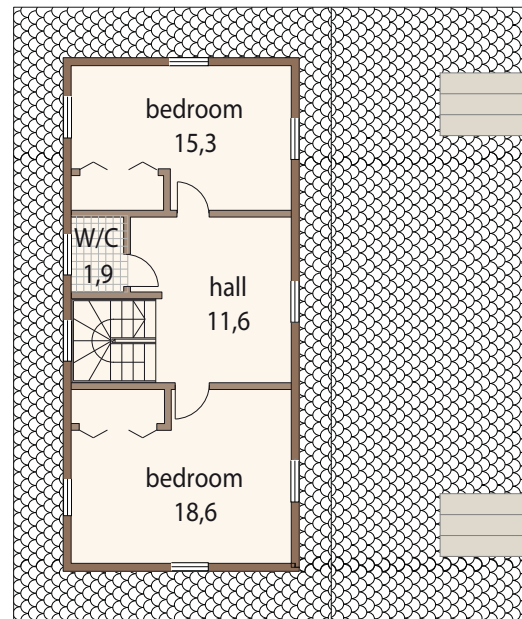
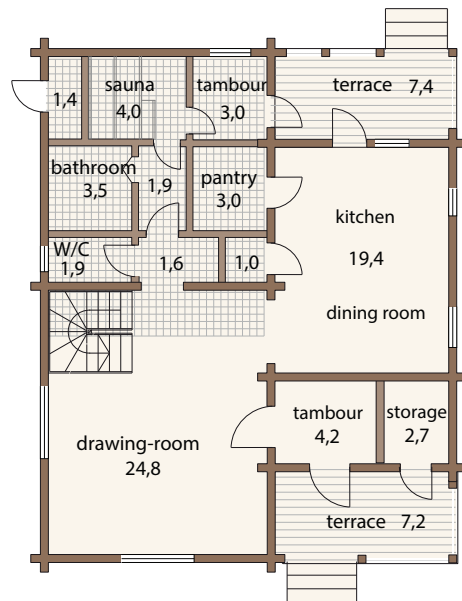
床面積	118,3 m <sup>2</sup>
テラス	48,0m <sup>2</sup>
寸法	8,0x11,0 m



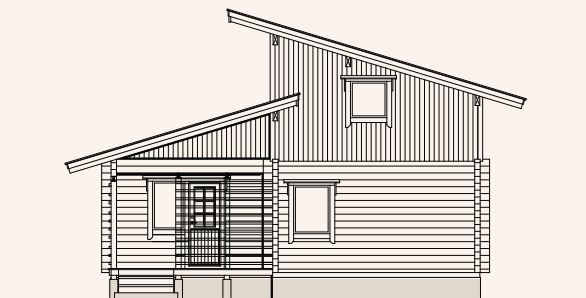
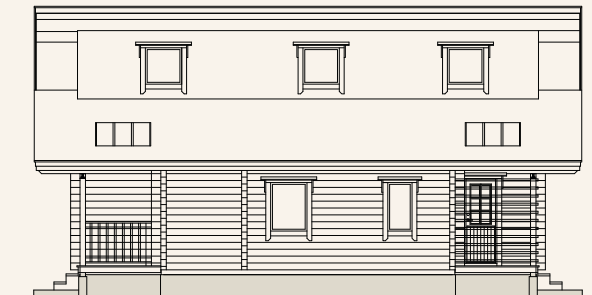
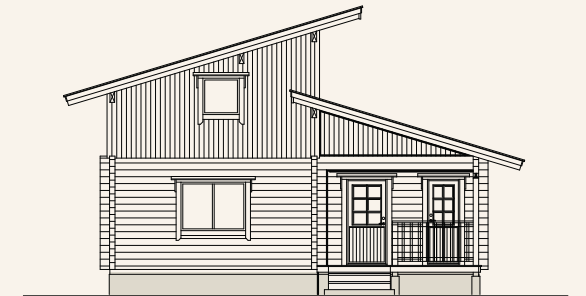


市街地にも調和する建物として設計いたしました。サンテラスを両側に設け室内を明るく演出しています。また段差の有る屋根は、室内の開放感を創り出し、全ての部屋にもれなく採光できるようにとの発想です。



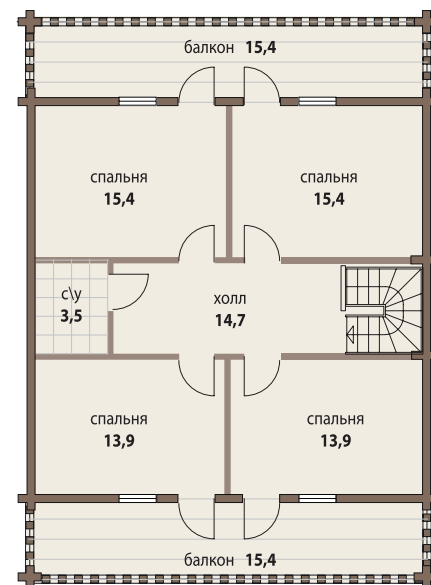
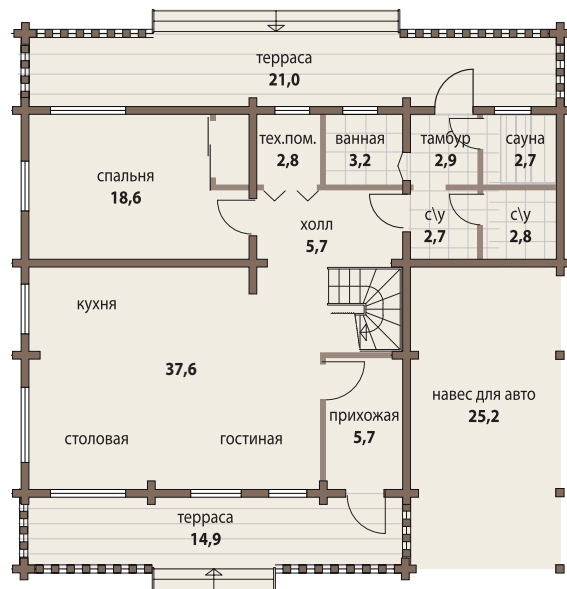


床面積	135,7 m <sup>2</sup>
テラス	16,0m <sup>2</sup>
寸法	9,0x11,2 m

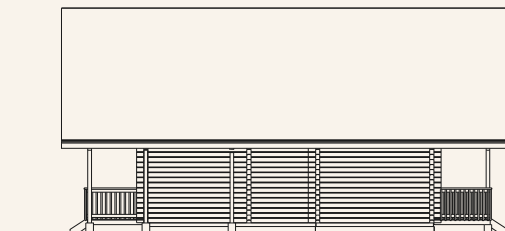


ご自宅用ログハウスというご依頼で設計いたしました。玄関付近にはガレージスペースも設け、車を降りて玄関まで雨天でも濡れずに移動できます。また全てのお部屋にはテラスが付き、開放感と機能性を重視いたしました。シンプルな構造で余裕の間取りにいたしました。





床面積	279,7 m <sup>2</sup>
テラス	73,1 m <sup>2</sup>
寸法	12,9x12,9 m

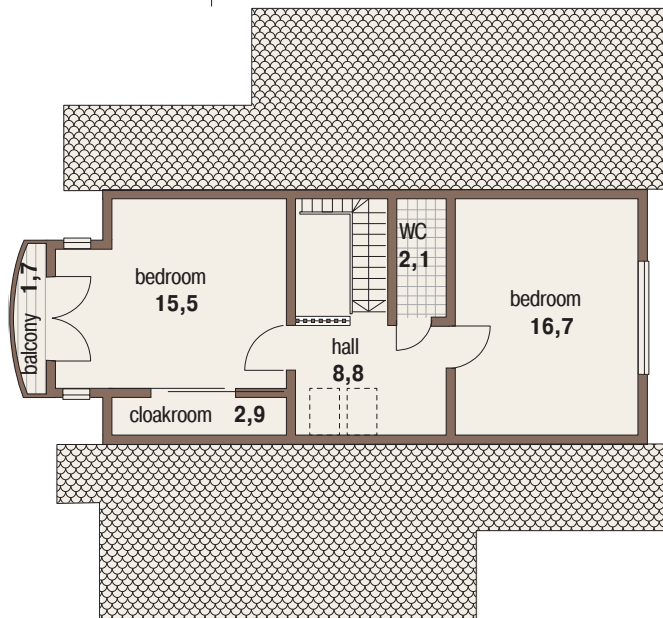
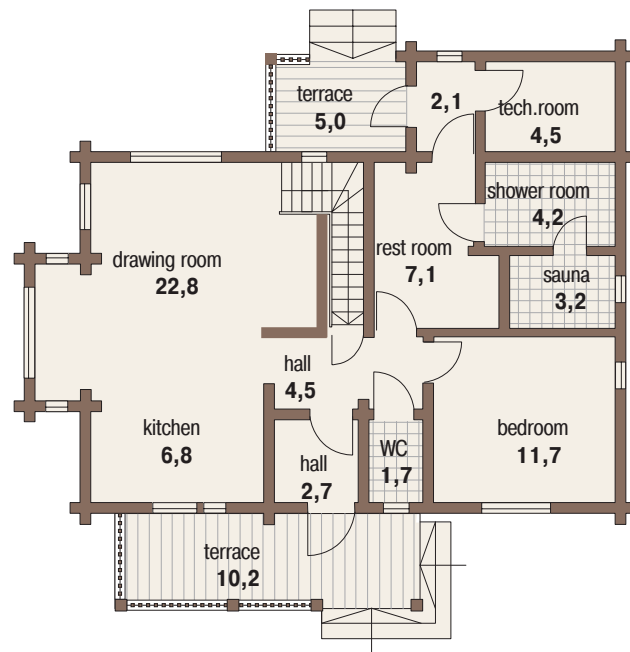


## THE CLASSIC HOUSE

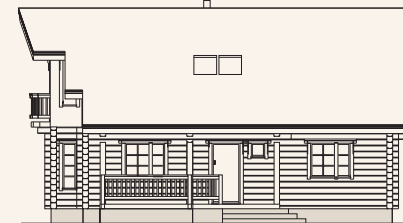
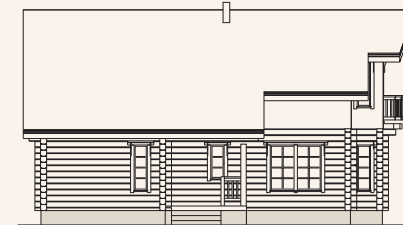
This well-proportioned house of very harmonious proportions is a really classic house. The medium-sized balcony in the French style, complete with lightly-twisted fencing, gives a lightness and uniqueness to the appearance of the house. The house is compact without losing any of the functional parts. On the first floor, there is a living room, a dining room, a kitchen and a toilet with a shower compartment and a sauna. There is also a guest room and a rest room with an opening onto the terrace. There is an exit way from the kitchen to the outside. On the second floor, there are two bedrooms, a spacious hall and a toilet. One of the bedrooms has a cloak room and an opening onto the balcony. hall leads to a fire place, and further on there is a dining room which is completed by an oriel window.



# THE CLASSIC HOUSE



床面積	156,2 m <sup>2</sup>
テラス	18,5 m <sup>2</sup>
寸法	11,6 x 10,7 m

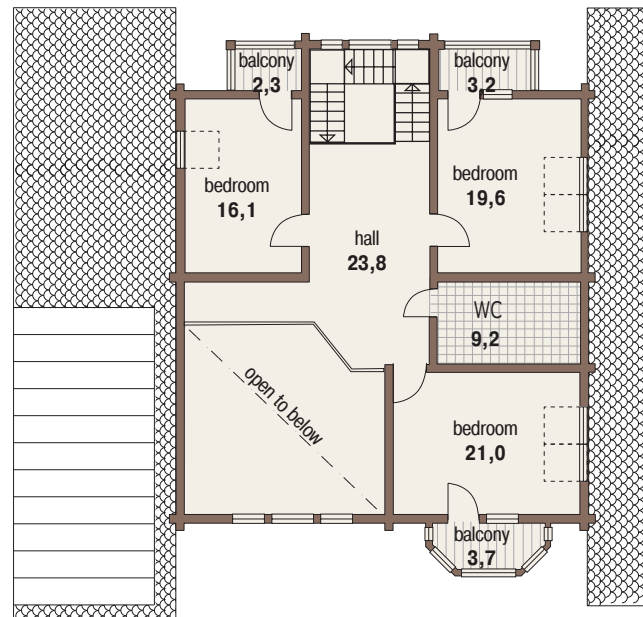
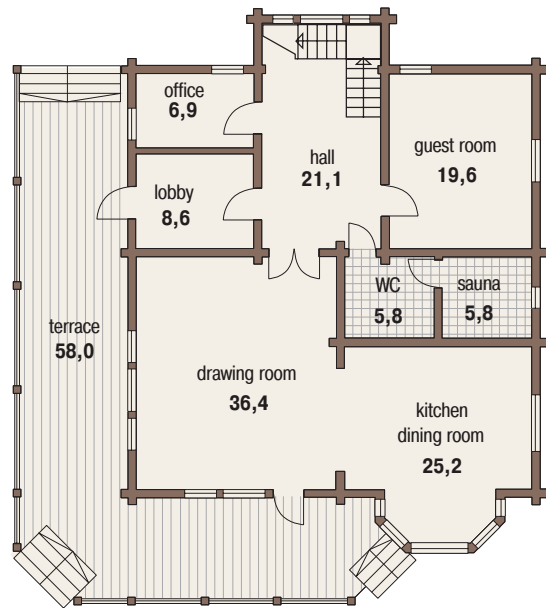


**SCANDINAVIA MK**

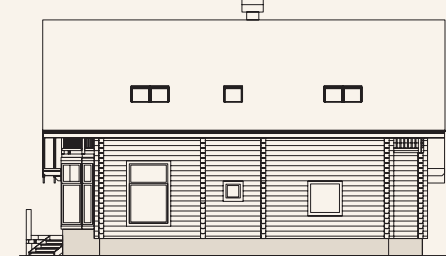
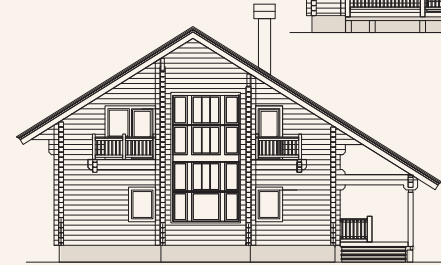
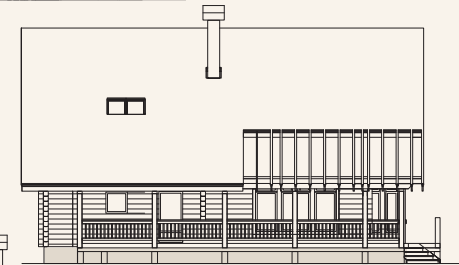
Scandinavia MK is a variation on the popular Scandinavia project. It is an extremely light and spacious house due to the large glazed second floor living room and an oriel window with a panoramic view, very well placed by the designers of this project. The distinctive feature of this project is that the two terraces are united into one, giving extra comfort and convenience to both guests and owners of the house. This area is perfectly suited for the leisurely taking of tea by the family on warm summer evenings. There is another balcony on the second floor, and the areas of the storage room and the entrance hall are larger on the first floor.



## SCANDINAVIA MK



床面積	315,3 m <sup>2</sup>
テラス	74,2 m <sup>2</sup>
寸法	14,5 x 16,3 m





**ARIZONA**

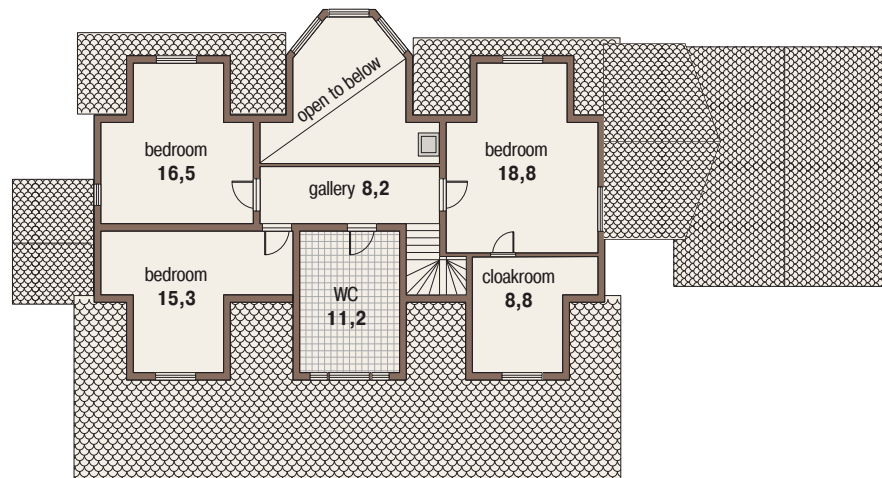
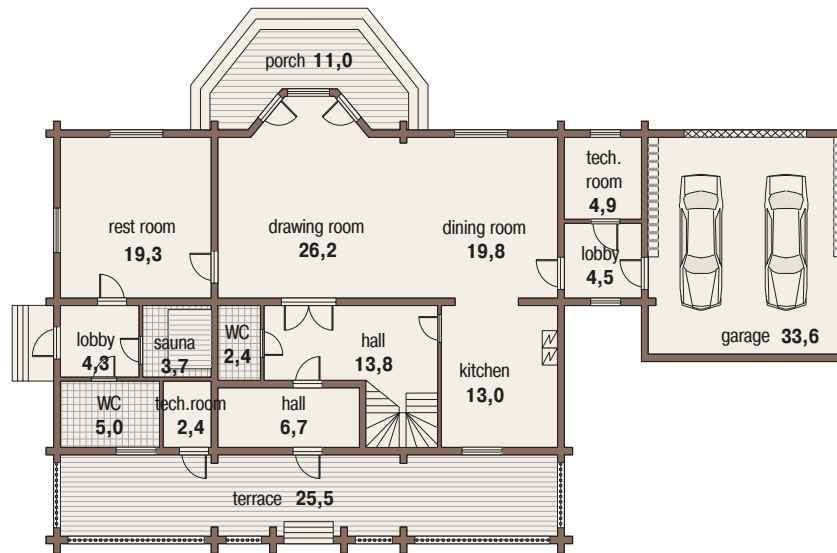
The architecture of this house is unusual in Russia. A wide roofed terrace, that runs for the whole length of the house, is, without doubt, both comfortable and practical in the climatic conditions pertaining in Russia. The unusual way in which the mansard has been constructed allows for many different possibilities with the interiors of the bedrooms.

A large, roofed terrace is accessible under even the most inclement weather conditions. Alternatively, if people feel the need to enjoy the beauties of nature and feel the expansiveness of the space around the house, then there is an open terrace accessible from the opposite side of the house.



## ARIZONA

床面積	315,6 m <sup>2</sup>
テラス	50,2 m <sup>2</sup>
寸法	23,5 x 13,7 m

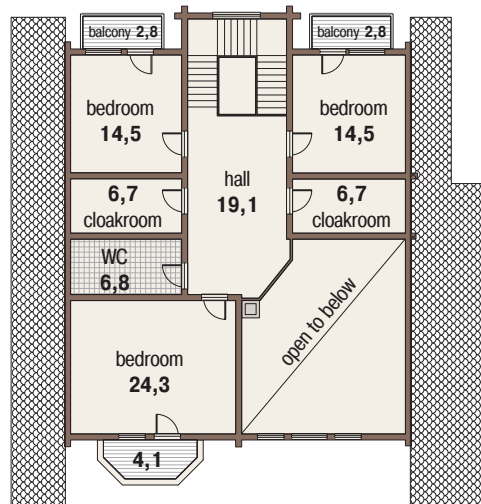
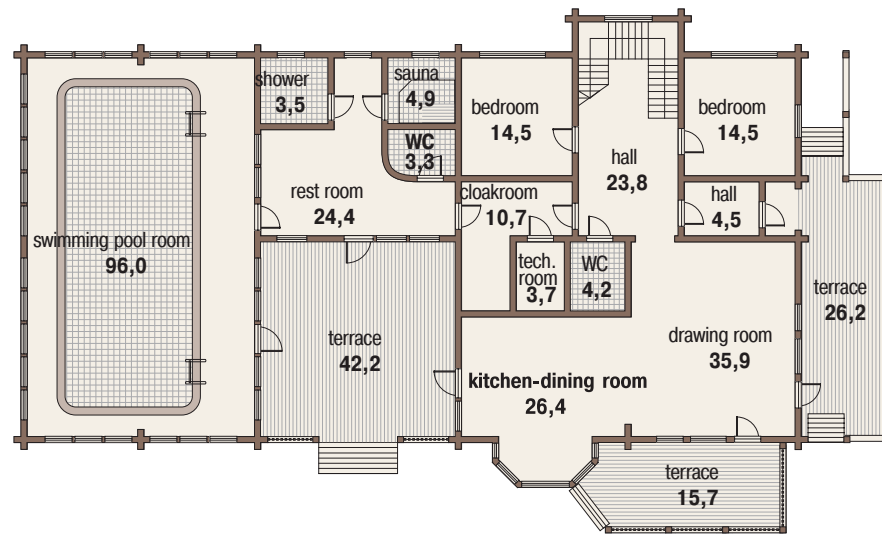


## SCANDINAVIA WITH A SWIMMING POOL

The architecture of this house is unusual in Russia. A wide roofed terrace, that runs for the whole length of the house, is, without doubt, both comfortable and practical in the climatic conditions pertaining in Russia. The unusual way in which the mansard has been constructed allows for many different possibilities with the interiors of the bedrooms.



# SCANDINAVIA WITH A SWIMMING POOL



床面積	499,6 m <sup>2</sup>
テラス	104,2 m <sup>2</sup>
寸法	28,8 x 17,1 m

